

# City Ranger 3500

A revolutionary solution for contractors and municipalities



# Impressive Performance and Flexibility



City Ranger 3500 gives you high performance, excellent manoeuvrability, easy operation, reliability and optimum comfort - and an all year equipment programme with no less than 14 attachments.

The City Ranger 3500 is a future-proof investment designed to meet the demanding standards of municipalities and professional contractors. It offers you the flexibility and versatility of an all year multipurpose utility machine, and at the same time you get the power and performance of a one-purpose machine. The City Ranger 3500 has a quick and easy attachment changeover, and the all-year equipment programme gives you full adaptability to meet new needs as they arise, maximising your ROI.

## **Category B driver's licence and high payload**

The City Ranger 3500 has a high GVW of 3500 kg ensuring you optimum efficiency. However, the Ranger is not too heavy to operate on pavements and it requires no more than a category B driver's licence.

## **Low-cost operation and maintenance**

Due to its simple construction and high quality components, the City Ranger 3500 offers great reliability, easy cleaning and minimal maintenance. The tyres used are standard van tyres that are easily changed, and the machine is fully hydraulic for higher wear-resistance.



## Safety and comfort

The City Ranger 3500 has a comfortable 2-seat cab with a low noise level. The driver's seat is placed in the right side close to the kerb, while the huge windscreen provides the driver with an excellent view to both front attachment and the surrounding traffic. A glass floor panel gives a direct view to the vacuum nozzle. All attachments are controlled by an ergonomically designed multifunction joystick with gel pad for soft hand support. Foot pedals and joystick are positioned appropriately and ergonomically correct for a good working position.

A fully suspended chassis, an independently suspended cab, and an air-suspended driver's seat reduce vibrations to a minimum in City Ranger 3500. Extra comfort and safety improving features are heatable side mirrors, low noise both in the cab and outside, and large glazed doors with sliding windows. Air conditioning is standard too.



### 49 HP and 4 wheel drive

4-wheel drive and 49 HP offer optimum grip & performance for superior handling of heavy all season assignments.



### Articulated and manoeuvrable

The articulated machine offers optimum flexibility and ensures access to narrow spaces.



### Operator comfort

Highly comfortable air suspended and heated driver seat. 2 seat safety cab with ideal view to front attachments and traffic. Low noise level in the cab.



### Easy and simple handling

The City Ranger is designed for easy operation with a minimal use of electronics.



### High-quality components

The City Ranger and its attachments are designed for a long product lifetime equipped with long-lasting high quality components.



### Easy attachment changeover

Attachment changeovers can be done in 10 minutes, depending on attachments. It is the fastest changeover-time in this machine class.



# Leaving Only Spotless Sweeping Results

## Suction sweeping with City Ranger 3500

The City Ranger 3500 offers an impressive suction sweeper performance, perfect for municipalities and contractors as a safe investment.

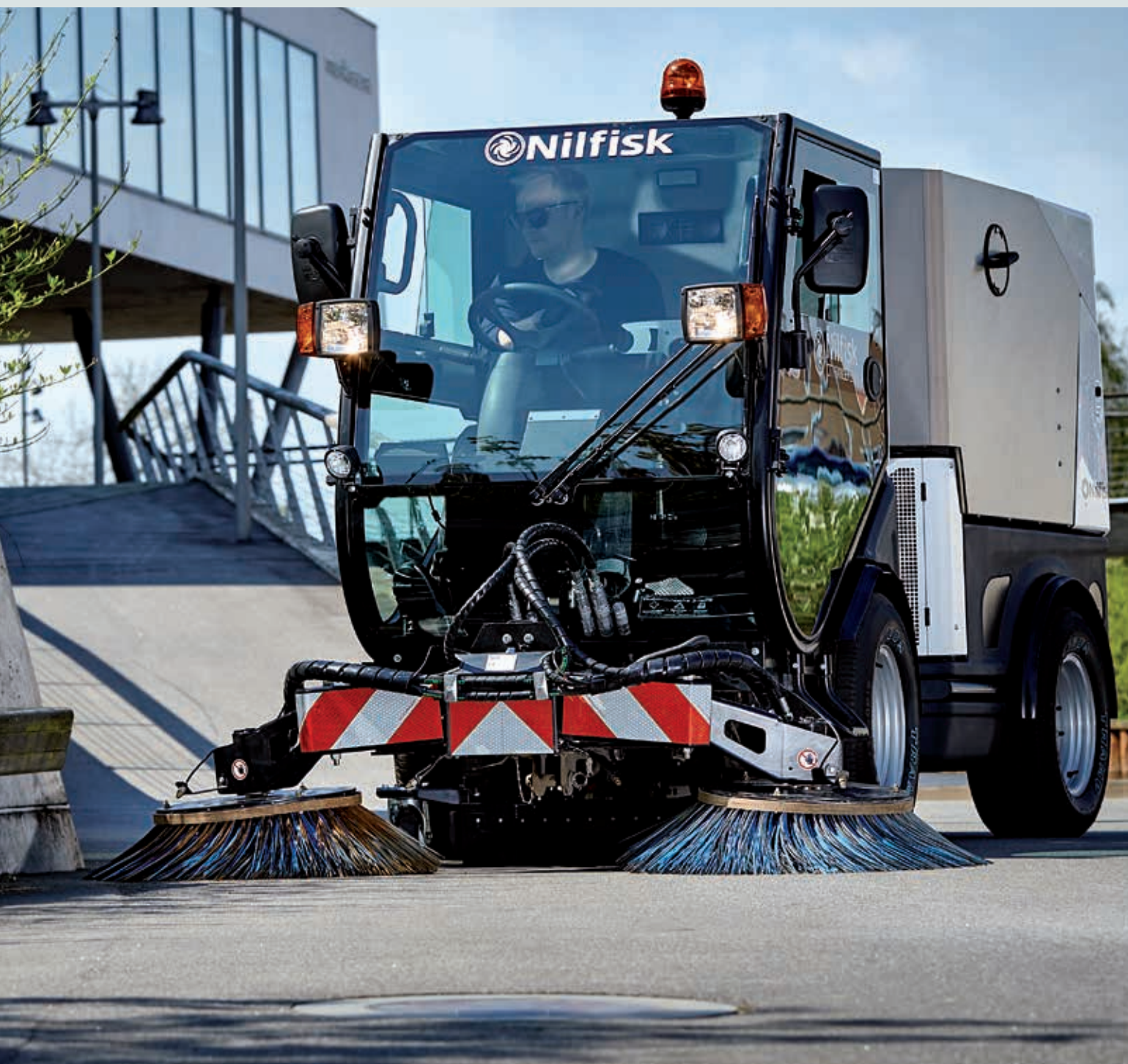
Town centres, sidewalks, streets and paths are sparkling clean when the Ranger has performed its task. Its unique hose routing ensures both a very high suction performance and energy-saving operation. Both heavy duty front brushes on the Ranger can be used independently. This allows the operator to easily sweep around pylons, street furniture and in car parks. The operator can easily adjust the sweeping speed of the brushes as well as the water quantity for damping.



### Adapt the suction sweeper to fit your needs with extra equipment

- 4 m wander hose with connections on both sides of the hopper
- Third side brush (quickly and easily fitted third brush) allows operation up to 3.10 m
- High pressure washer with 110 bar 11 l/min. with hand lance
- 2 additional access doors either side for loading large debris or litter bins
- Rear view camera with 7 inch color monitor
- Vacuum nozzle camera - in combination with rear view camera





### **High performance and capacity**

The City Ranger is equipped with a high performance turbine mounted under the hopper. It has a straight suction hose connected to the hopper ensuring optimum suction and sweeping results

High payload: 1.100 kg

Wide sweeping width: 1.3 m to 3.1 m

### **Dust control**

The City Ranger 3500 is PM10 certified and has perfect dust control with 4 water nozzles on the brushes (2 on each brush) and additional 4 nozzles inside the suction hose. The hopper is equipped with a water recycling system that reduces the water consumption significantly while adding to the number of operating hours between refilling of the water tank.

### **Multifunction 3-in-1 hopper**

The hopper can be used for street sweeping, grass collecting and street washing. It is made from stainless steel and has a high capacity. The high payload makes the Ranger extremely efficient, and the 1.6 m high dump is ideal for emptying into containers - directly from the driver's seat.



## Always in Superior Weed Control

### **Non-toxic** weed control with City Ranger 3500

The City Ranger 3500 weed brush efficiently removes weeds from streets and paved areas. It can be combined with the suction sweeper hopper for collection of the rippings in the same operation.

The powerful steel brush element pulls the weeds and prevents new seedlings from germinating. Regular brushing keeps an area weed-free without the use of pesticides.

The weed brush is operated directly from the driver's seat and the orientation of the brush can be turned left / right, angled left / right and angled forward / backwards. The weed brush is therefore hydraulically adjustable in all directions, which allows the driver to vary the brush ground pressure and thereby target his efforts.





# A Green Solution within Performance and Versatility

## Green Care with City Ranger 3500

Handle your green care assignments with all the power and efficiency you need - with the Ranger as your riding lawn mower.



The City Ranger 3500 can be equipped with green quality attachments like rotary mowers for grass collecting, supplying a cutting width of up to 1.500 mm with an adjustable cutting-height of 30 to 150 mm.

### Professional efficiency and performance

The 3 mower blades ensure an indicative mowing area of 15.000 m<sup>2</sup>/h. You can top this with the flexible grass collector, using the suction sweeper hopper for collection, which allows an airflow of 6.800 m<sup>3</sup>/h - and a hopper volume of 1.400 l as well as a high tip function up to 1.600 mm.





## Washing the City Completely Clean

### Street washing with City Ranger 3500

Need blue washer capability? Find the capacity to match your specific assignment in City Ranger 3500 - an efficient street washer with high manoeuvrability offering impressive cleaning results.

The street scrubber drier works in tandem with the City Ranger 3500 suction sweeper hopper and is optimised for concrete tiles, concrete, pavements, epoxy floors, granite, stone carpets, etc. It has a very strong suction power even when driving backwards - making it ideal for cleaning into corners.





### **City Ranger 3500 - Street Scrubber Drier**

Due to independent suspension, the squeegee follows the ground perfectly, while three piano wheels ensure optimum cleaning results when passing over unevenness.



### **Scrubbing every inch of the street**

The low height of the scrubber ensures an excellent operator view and makes it possible to wash below benches and other obstacles, and a tilting support system enables the machine to scrub on ramps.

### **Street washing attachments for professional users**

Adapt the City Ranger 3500 to perfectly fit your needs with street washing attachments fully aligned to the machine.



## A Heavy-duty Snow Removal Machine

### **Snow removal** with City Ranger 3500

When winter arrives, the powerful City Ranger 3500 offers high performance, excellent manoeuvrability, easy operation, reliability, and optimum operator comfort.

Handle winter assignments efficiently with the wide range of professional winter attachments covering salt and sand spreader, snow sweeper, snow plough, snow V-blade and roller spreader. All professional quality attachments fully aligned to the machine and easy to handle.

### **High performance winter attachments**

With its versatility and wide range of professional winter attachments, the Ranger is a perfect winter solution for larger contractors and municipalities. The high quality attachments are all rust protected and can be operated with a low noise level and vibrations going into the chassis are reduced to a minimum - ensuring optimum comfort.

**City Ranger 3500 - Snow sweeper**

A perfect solution for lighter snowfalls and more demanding tasks.

**City Ranger 3500 - Snow plough**

Keep the traffic running smoothly with the powerful Ranger equipped with the 150 cm wide, manoeuvrable snow clearer. A perfect choice for high speed snow clearing at 30 km an hour.

**City Ranger 3500 - Snow V-blade**

Professional snow clearing where the "V" cuts right through up to 45 cm heavy and encrusted snow with hydraulically-adjusted blades operated by joy-stick.

**City Ranger 3500 - Roller spreader**

Perfect solution where heavy dosage or restricted spreading is required on bicycle roads or narrow walk ways, performed with a spreading width of 1.2 m and a capacity of 350 l.

**City Ranger 3500 - Salt and sand spreader**

Efficient salt and sand spreader with 800 l capacity handles de-icing on roads, parking areas and pavements - perfect for contractors and municipalities.



# Nilfisk Outdoor Division

27

## Ingenuity and Reliable Quality Solutions

The Nilfisk Outdoor Division utilises outdoor knowledge to build a dedicated product portfolio. We can find a perfect match to your outdoor cleaning need, in our full line of Rangers.

The Nilfisk Outdoor Division has become the market leader within the outdoor cleaning and maintenance segment for compact utility machines. A full range of Rangers combined with a complete attachment programme for green, white, blue and black assignments constitutes our solution platform.

### The Nilfisk Outdoor offering

- Competitive and complete offering of machines
- Multipurpose abilities with quality attachment programme
- Financing and purchase programmes to suit your needs
- Tailor made service contracts
- Reliable delivery and fast response logistics
- Efficient training programmes
- We understand our markets and the customers' individual needs



### Get the feel and see it for yourself

Innovative features and genuine product quality are best experienced at first hand - so contact us to arrange a product demonstration.

Your Nilfisk Outdoor dealer

Nilfisk Outdoor Division A/S  
Transportvej 27  
DK-7620 Lemvig  
T. +45 97 81 12 05  
[info@nilfisk-outdoor.com](mailto:info@nilfisk-outdoor.com)  
[www.outdoor.nilfisk.com](http://www.outdoor.nilfisk.com)

