



menart.eu



Composting Machinery  
Waste Recycling Plants  
Roadside Equipment

Catalogue

---





# MENART

## About us



> Since 1961, MENART company is fully dedicated to designing and manufacturing composting machines and waste sorting plants for environmental care and recycling.

> MENART new factory is located in the south of Belgium in environmentally-friendly buildings. All equipment is designed and assembled by our qualified engineers and technicians.

> MENART is proud to have its equipment bringing solutions and satisfaction to a very diversified range of industries and needs (industry and agriculture).



# International Dealer Network



- > MENART is an international oriented company exporting all over the world.
- > MENART continues to expand worldwide thanks to an extensive net of dealers and customers.
- > MENART dealers actively participate in sales and after-sales to guarantee the satisfaction of our customers.

## EUROPE

Switzerland	France	Belgium	Netherlands
United-Kingdom	Luxemburg	Spain	Portugal
Denmark	Czech Republic	Ireland	Estonia
Croatia	Austria	Bulgaria	Latvia
Romania	Greece	Iceland	Russia
Slovenia	Poland		

## AFRICA

Morocco	Tunisia	Algeria	Egypt
South-Africa	Ghana	Mali	Cameroun

## ASIA

Vietnam	Malaysia	Indonesia	Philippines
Jordan	Pakistan	Israel	Lebanon
Australia	Iran		

## AMERICAS

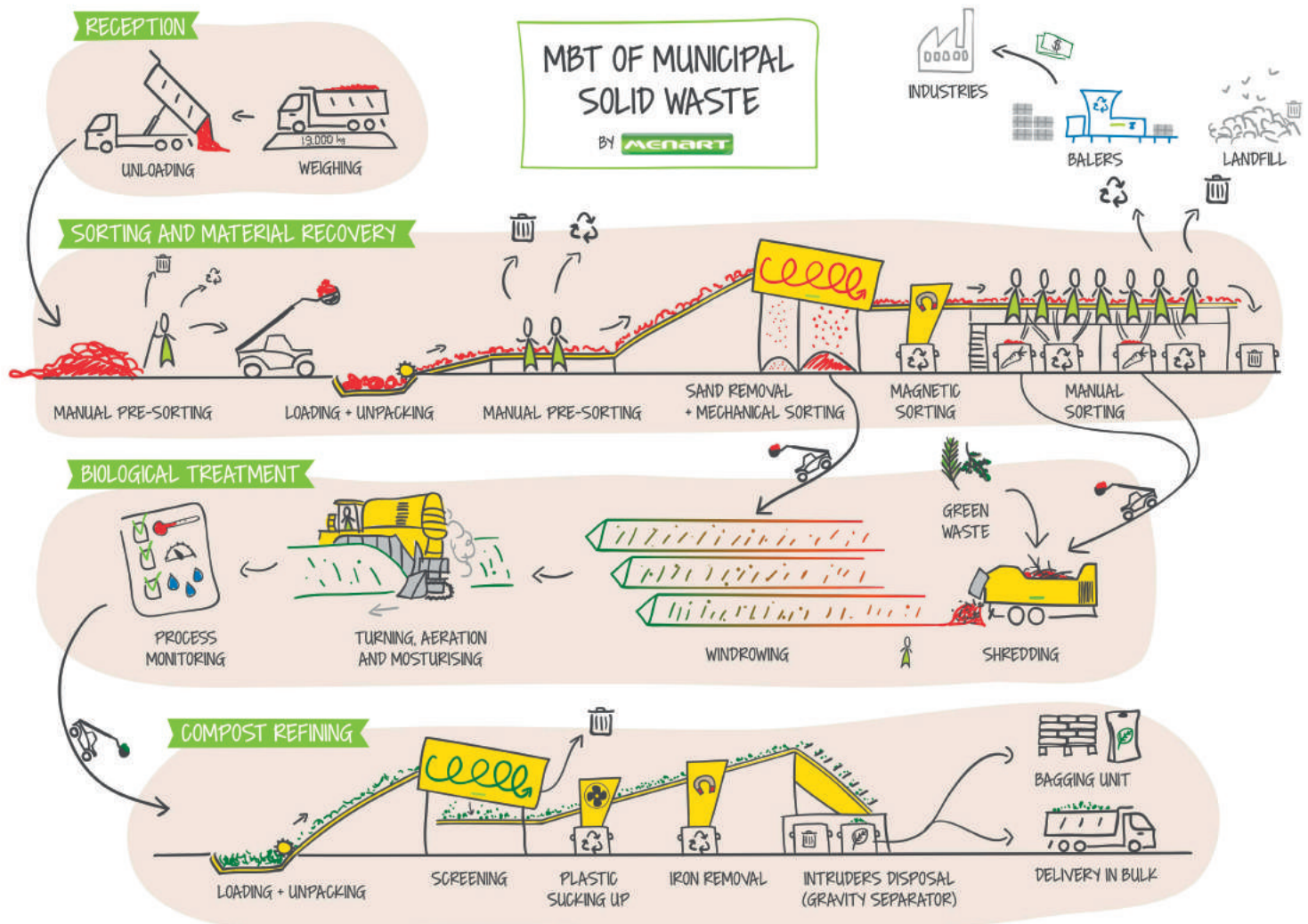
USA	Canada	Mexico	Guatemala
El-Salvador	Honduras	Nicaragua	Colombia
Venezuela	Ecuador	Argentina	Brazil
Chile	Peru		



# Household waste recycling

## Material sorting and recovery plants

MENART designs and supplies household waste sorting equipment to recover valuable materials. Along with its organic waste recycling machines, MENART provides a full solution for municipalities.



Visual translation:  
Kdeline Guerlat for innerfrog.com



Possible extensions to the MBT plant: balers for recyclable materials; RDF equipment; waste to energy; ...





### Advantages of MBT plants

- > Safe for environment and human health;
- > Extended landfill lifecycle;
- > Saleable commodities (glass, cardboard, plastics, metals, compost, RDF);
- > Employment and social development.

### Advantages of MENART solutions

- > Tailor-made sorting lines;
- > Simplicity, robustness and reliability;
- > Easy to operate and to maintain;
- > Wide scope of services from engineering to local training;



## REFERENCES

Vietnam, Pakistan, Bulgaria, Romania, Algeria,...



# Self-propelled windrow Turners

## MENART SPM series



- > Outstanding capacities
- > Powerful & robust
- > All-terrain manoeuvrability
- > High quality of aeration
- > Extensive choice of models
- > Operator comfort & safety

		SPM-36	SPM-47	SPM-55	SPM-63	SPM-73
Engine Power	hp	145	228	275	350	630
Max windrow width	m (ft)	3,6 (11'9")	4,7 (15'5")	5,5 (18')	6,3 (20'8")	7,3 (23'11")
Tunnel height	m (ft)	1,7 (5'6")	1,9 (6'2")	2,1 (6'10")	2,4 (7'10")	2,8 (9'2")
Max windrow height -tunnel raised	m (ft)	2,1 (6'10")	2,4 (7'10")	2,6 (8'2")	2,9 (9'6")	3,3 (10'9")
Indicative capacity	m <sup>3</sup> /h (yd <sup>3</sup> /h)	2000 (2600)	3000 (4000)	4000 (5000)	5300 (7000)	7000 (9000)

### APPLICATIONS

green waste, household waste, polluted soil, biosolids, sugar cane filter cakes, palm oil EFB, animal manure (dairy, poultry...), etc.



### Excellent aeration quality

MENART turners have been specially designed to optimize the aeration and mixing process: larger trapezoidal tunnel, powerful rotor drum, no compacting effect, left-right crossing flow.



### High productivity

The SPM turners are equipped with powerful track clearers to improve traction grip. And thanks to their large tunnel, they can process huge windrows at a high speed.



### All-terrain machines

MENART turners can lift up by 50 cm so you will never get stuck in the windrow. MENART turners are the only ones that can tilt forward or backward for ease and safe movement in slopes. Moreover, the left and the right traction (wheels or tracks) are independent and can adapt to the ground.



### Saving space

Thanks to the track clearers, windrows can be brought closer on the site, therefore gaining space. In addition, MENART turners are big but compact and they can spin around at the end of the windrow. Composting plant area is optimized.



### Maximum driver comfort

The cabins are the most modern with all-around visibility and pressurized air conditioning. Joystick controls are « at hand » for easy use. A fun and intuitive touch screen allows the operator to have all the machine information at a glance. The engine compartments are soundproofed.



### Operators safety

MENART turners are easy and safe to maintain thanks to a large and secure platform. The tunnel is equipped with protection against projectiles: in the front a rubber curtain and at the rear an adjustable metallic deflector.

## AVAILABLE ACCESSORIES

Irrigation connections; Automatic irrigation hose roller; Spraying device; Wheels or tracks; Reinforced rotor; Fleece/ tarp roller devices...



# Tractor-driven windrow Turners

## MENART SP series



### SP turners

- > Outstanding capacities
- > Strong and robust
- > Easy and safe to transport
- > Excellent windrow aeration

### Tractors features

- > Creeper gear not required
- > SP turners push the tractor
- > Low fuel consumption

		SP-30	SP-40	SP-45	SP-50	SP-60
Engine Power	hp	60 to 95	80 to 110	90 to 150	100 to 180	200 to 250
Max windrow width	m (ft)	3,4 (11'1')	4,4 (14'5")	4,9 (16'0")	5,4 (17'8")	6,4 (21')
Tunnel height	m (ft)	1,7 (5'6")	1,8 (5'10")	1,9 (6'2")	2 (6'6")	2,2 (7'2")
Max windrow height -tunnel raised	m (ft)	2,2 (7'2")	2,3 (7'6")	2,4 (7'10")	2,5 (8'2")	2,7 (8'6")
Indicative capacity	m <sup>3</sup> /h (yd <sup>3</sup> /h)	1100 (1400)	1800 (2350)	2100 (2750)	2500 (3300)	4000 (5200)

### APPLICATIONS

Green waste, household waste, polluted soil, biosolids, sugar cane filter cakes, palm oil EFB and POME, farming (dairy, poultry...), etc.





### Outstanding yield

In the category of tractor-powered turners, MENART machines can process the widest and highest windrows in the world, and at very high speed.



### Amazing capacities

Thanks to its powerful rotor drums and its 50 cm tunnel raising capability, the MENART SP turners can process every matter even under extreme conditions.



### Best operating costs

The turner driving wheels push the turner and the tractor. Tractors do not need creeper gear, they run in neutral gear. SP turners go faster, process higher windrows, consuming same fuel as a usual turner on a same period of time. Thus the fuel consumption per composted Ton is very low.



### Excellent mixing quality

Excellent mixing and aeration is ensured by the specific paddle orientation and by the large open tunnel. Refining is attained thanks to mechanical hits made by the paddles. The resulting quality is excellent even at the bottom right of the windrow.



### Easy to transport, pulled by its tractor

The center of gravity is low, and the machine stability is outstanding. SP turners are very easy and safe to be towed and moved around, on any kind of terrain (roads, dirt tracks). SP turners are all-terrains vehicles, ideal for contractors.



### Easier work management

The touch-screen in the cab does much more than just control the machine. With the recording of the data (windrow identification, customer name, production time, etc.) it gives you the precise statement of the work done and you can download the data on your computer easily.

## AVAILABLE ACCESSORIES

Liquid injection connections; Spraying devices; Reinforced rotor drum, Distance counters; Fleece roller, High traction outer wheel.

# Trommel screens

## Mobile TR series and Compact TSC series



> The TR series is made up of a road chassis, a feeding hopper, a screening drum, 2 discharge conveyors for 2 compost dimensions. It is a transportable trommel.

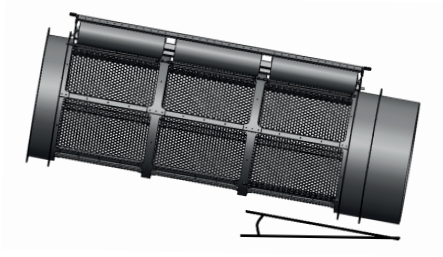
> The TSC screens are simpler as they do not have the chassis nor the conveyors. They are therefore compact and cost-effective. With optional wheels, they can be towed on site.

		TR/TSC-1535	TR/TSC-1950	TR/TSC-1960
Drum screen diameter	m (ft)	1,55 (5'1")	1,89 (6'2")	1,89 (6'2")
Drum screen overall length	m(ft)	4 (13'1")	6 (19'8")	7 (22'11")
Screening area	m <sup>2</sup> (ft <sup>2</sup> )	13,9 (150)	25 (270)	30,5 (328)
Hopper volume	m <sup>3</sup> (yd <sup>3</sup> )	1,7 (2,2)	2,7 (3,5)	2,7 (3,5)
Feeding height : TR TSC	m(ft)	2,61 (8'7") ~4,5 (15')	3 (9'10") ~4,5 (15')	3,05 (10') ~4,5 (15')
Diesel engine power	hp	50	83	83
Electric motor power (TSC series only)	KW	18	30	30
Indicative Capacity	m <sup>3</sup> /h (yd <sup>3</sup> /h)	40 (50)	100 (130)	120 (160)

### NOTE

MENART also supplies custom screening plants consisting of 3 main components: a hopper; a feed conveyor; and a trommel. Ask for the TS series.





### Titled drum technology

Inside the drum, the material moves forward thanks to both the drum inclination and the lifting bars.



### Mechanical refining effect

The material is drawn upwards in the drum and then falls down on a perfectly clear floor of the drum. The impact due to the fall allows to break and better screen agglomerated balls.



### Efficient screening

The grids are made of round section wires which make easy for the fine material to pass through. It is a top efficient sifting mesh. Additionally, the drums are equipped with monofibre wear resistant brushes for self-cleaning action.



### Optimized yield with compact machine

The efficiency of the screening technology ensures larger production capacity on a shorter length drum.



### Clogging-free

The inclined drum technology avoids use of conveying auger inside the drum, which considerably reduces grid clogging.



### Versatile use

Users can adjust the drum rotation speed as well as the drum feeding speed depending on working requirements.

## AVAILABLE ACCESSORIES

Various choices of mesh grids or perforated plates mesh, Remote control, In situ transport wheels (TSC), conveyor lengths (TR), ...

# Shredders / Grinders



- > 4 frame models, some with different power option
- > Available in Diesel, Electric, or PTO-tractor
- > Mobile or stationary
- > Perfect for small and medium size sites

		H-102	H-121	P-145	P-160
Diesel engine Power	hp	51	147	up to 350	up to 540
Electric motor power	kW	37	75	200	315
Tractor power / PTO rpm	m (ft)	up to 70 (540)	up to 120 (1000)	up to 200 (1000)	up to 300 (1000)
Max branch diameter	cm (in)	8 (3")	15 (6")	20 (8")	25 (10")
Indicative capacity	m <sup>3</sup> /h (yd <sup>3</sup> /h)	up to 30 (40)	up to 50 (65)	up to 200 (260)	up to 300 (400)

## APPLICATIONS

green wastes, branches, pallets, packing wood, food scrap, bio-waste, manure, etc.





### High working capacity

The feeding hoppers are designed to be loaded by loaders, tractors, cranes, etc. The rotors are large and heavy. Small and medium MENART shredders are ideal for shredding large amounts of waste in a short time.



### Robust and easy to use

MENART swinging-hammer shredders can shred any mix of green waste (grass, leaves, branches, wood, etc.), pallets, construction wood, food scrap, bio-waste, manure, etc. without excessive wear compared to chippers.



### Versatile use

The speed of the moving floor is synchronized with the rotation speed of the compacting roll. Slow speed, fine output. High speed, coarse output. The user adjusts the speed according to his needs.



### Output quality

The shredded material is not crushed nor chipped. The fibres are broken and aerated, very good as a bulking agent for further composting applications or mulching.



### Mechanical reliability and robustness

The shredders are protected by several security systems: a no-stress system, automatic system for optimum feeding depending on the workload. Engine and rotor transmissions are protected against shocks and overloading, which also reduces maintenance and repair requirements.



### Mobility and all terrain machines

On roads, on site or in fields, MENART shredders are easily transported.

## AVAILABLE ACCESSORIES

Several choice of hammers, Discharge conveyor, Remote control, Screening grids for finer shredding, Automatic centralized lubrication system, Organic oils, And more...

# More composting equipment



## Side-discharge turners

MENART has developed 2 side-discharge turners: one self-propelled and one tractor-driven. They can process 3,2 meter high piles. Some features: 2 conical rotor drums; steering wheels for better manoeuvrability; adjustable deflector on the conveyor.



## Semi-industrial bagging unit

Made of a hopper with gauge, and a weighing device with electric controls, the MENART bagging unit is simple and can reach 100 compost bags per hour. .



## Coarse compost cleaner

MENART SSAM compost cleaner filters the coarse compost allowing to recover the clean wood from the waste. MENART compost cleaner makes several jobs in one: stone removal thanks to 2 tilted conveyors with adjustable speed; iron removal thanks to a magnetic pulley, light plastic removal thanks to 2 wind sifters.

# Roadside equipment



## MENART Weed-brush All-in-1 implement.

The equipment can be used with horizontal brush to sweep or with vertical brush to clean. Rotation in both directions. There is no need of adapter. The frame remains the same and it is easy and quick to change brushes. The versatile brushes can be mounted on the right or the left side of the tractor. The brush is fully articulated and can adjust to the ground shape.



## MENART verge scraper

The auger, driven by a hydraulic motor, can be tilted according to the desired ground slope for water drainage. The soil on a height of 15 to 20 cm is pushed into the ditch.



## MENART ditch digger

Tow-behind ditch digger consisting of an articulated arm with a large mill at its tip. Mechanical transmission. The mill excavates the earth shaping a perfect ditch. Hydraulic motions are controlled by electric button: arm opening (working depth); mill orientation; lateral displacement if any; height displacement if any; deflector if any. Various models available.



# References



Polluted Soil



Green Waste



Sugar cane



Municipal Solid Waste



The world's largest palm composting plant



Dairy



Pallets



Green Waste



Poultry



Sugar cane



MSW



Waste water sludge



W2E



The world's largest PTO turner



Vegetable farming



Palm oil EFB



The world's largest autonomous turner



Manure



**MENART**

**Ménart Belgique**

Rue Benoît, 31  
B-7370 Dour  
Tel +32 (0)65 61 07 60  
Fax +32 (0)65 61 07 49  
E-mail : [info@menart.eu](mailto:info@menart.eu)

**Ménart France**

Rue Ambroise Croizat  
F-59494 Petite-Forêt  
Tel +33 (0)3 27 31 03 87  
Fax +33 (0)3 27 31 11 36  
E-mail: [info@menart.eu](mailto:info@menart.eu)

**[www.menart.eu](http://www.menart.eu)**